

# Waitohu School

## Newsletter – April 4 - 2019

For absences please phone 364 8272 or text 027 545 0530

### Waitohu School Gala - Only 3 more sleeps!

Sunday 7 April

11.00am - 2.00pm

**THANK YOU** to everyone who is helping to make this a great event.

The planning is done, people have volunteered their time, we have loads of awesome items and neat activities set to go.

There are two main ways you can help between now and the gala.

#### **CAKE STALL:**

Attached to last week's newsletter was a paper plate. We ask that every family contribute by filling this plate (or your child's decorated cake box), with goodies to be sold at our cake stall. Please *EVERYONE* return the plates to the *LIBRARY* on *SUNDAY* morning by 10.30am. (Items can also be delivered to the school office tomorrow morning).

Please return decorated a cake boxes (with goodies inside) by 10.00am on *SUNDAY* morning in time for judging. Please make sure your child's name and year is clearly on the outside of the lid.

Thank you.

#### **LET OTHERS KNOW:**

Please encourage your friends, family, work mates, church friends, sports team members..... to come to our Gala – perfect place to have lunch on Sunday.

# Harcourts

## Natalie Malloy

Licensed Real Estate Consultant

M 022 302 2660 P 06 364 5284

natalie.malloy@harcourts.co.nz

Team Group Realty Limited Licensed Agent REAA 2008

169-175 Main Highway, Otaki

PO Box 15148, Otaki 5542

www.teamharcourts.co.nz



List and sell exclusively with Natalie and she will donate \$250 to our school.



## Otaki Vets

269 Mill Road

Otaki

06 3646941 06 3647089

contact@otakivets.co.nz

www.otakivets.com

Angela Ford  
BVM&S MANZCVS

Maria Lombard  
BVSc

Helen Beban  
BVSc MBA

Graham Kirker  
BVSc

Olivia Baker  
BVSc BA

New Zealand's No. 1 Rock Group



# WINSTONE

AGGREGATES

Otaki Quarry, Main Road, Otaki  
Phone 364-8932



first  
national  
REAL ESTATE | Otaki



Grant Roberison

ARENZ  
Principal  
021 660 113



Derek Kelly

Registered REA 2008  
Salesperson  
0210 832 6460

PHONE 06 3648350

EMAIL grant@fnotaki.co.nz : derek@fnotaki.co.nz

WEB otakiproperty.co.nz

GBR REALTY LTD MREINZ Licensed Agent REAA 2008  
238 Main Highway Otaki

List and sell exclusively with Derek or Grant and they will donate \$250 to our school



## COASTWIDE PLUMBING LTD

PLUMBING ROOFING DRAINLAYING  
SPOUTING & MAINTENANCE

027 2878 001

coastwideplumbing@gmail.com  
www.coastwideplumbing.co.nz

## In-home childcare vacancies available



Jeff

PORSE Educator

available in the Otaki area

(06) 364 7160

For more information please contact

PORSE Mana Office ph 04 233 0494

porse.co.nz 0800 023 456

porse  
Growing little  
minds at home.

## Brendon Heenan

TALL POPPY REAL ESTATE AGENT & OTAKI  
FRANCHISEE OWNER

M 027 479 2772

P 06 3648833

E brendon.heenan@tallpoppy.co.nz

tallpoppy.co.nz

Buisara Ltd REAA-licensed MREINZ



List and sell exclusively with Brendon and he will donate \$250 to our school.



## ELECTRICAL DYNAMICS

NEW ZEALAND LIMITED

Electrical & Audio / Visual Specialists

Rob Wilkinson: 021 034 5252

Email: electricaldynamicsnz@gmail.com

## Coastal Landscape Supplies Ltd



- Topsoil
- Compost
- Bark Products
- Mulch
- Firewood

☎ 04-293 6621

☎ 021-419 672

"We Deliver"

13 Omaha St, Waikanae

www.  
coastallandscape.com.nz



WE APPRECIATE THE SUPPORT OF OUR NEWSLETTER SPONSORS - THANK YOU

**Can our AWESOME GALA VOLUNTEERS please be at the school at  
9.30am on Sunday to help set up and then run their stall.**

**THANK YOU**

<b>Stall</b>		<b>Name</b>
<b>Friday 5 April 9.05am White Elephant Sorting</b>	0	Riteria Ruru, Declan Cox, Judith Griffin, Rebecca Hines, Tracey Savage, Paula Watkins
<b>American Hot Dogs</b>	0	Riteria Ruru, Derek Kelly, Jonah Pritchard
<b>Lamb on a Spit</b>	0	James Wilson, Paula Archibald, Ralf Kuester
<b>Sausages</b>		Harcourts Ōtaki
<b>Hamburgers</b>	0	Kyle Johnston, Nathan Stent, Tanya Doyle
<b>Confectionary/Drinks</b>	0	Michelle Eastwood, Ana Stojanovic, Rumaiti Royal-Meyer, Jodie Molloy
<b>White Elephant</b>	0	Sonya Howland, Amanda Tahere, Paula Ironside, Rebecca Graham, Vincent Rawiri
<b>Clothes</b>	0	Emma Davis, Lisa Brough, Rebecca Hines
<b>Quick Fire Raffle</b>	0	Penny Gaylor, Adele Milldove, Jin Humphreys, Shelly Warwick
<b>Face Painting</b>	1	Kirsten Heenan, Krissy Hailwood, Bronwyn Doar
<b>Funky Hair</b>	0	Angela Park, Rebecca Whitt, Te Ataahua Epiha
<b>Vegetables / Plants</b>	0	Sharon Gilpin, Gerard Ward, Fiona Rutter, Karen Morgan
<b>Cake Stall</b>	0	Diane Taylor, Angela Taylor
<b>Café Waitohu</b>	0	Tiana Morgans, Renee Hawea
<b>Books/Toys</b>	0	Barbara Bevan, Amy Hawea
<b>Jumpy Castles</b>	0	FunzOwn Staff
<b>Rides</b>	0	FunzOwn Staff          Teachers x 2
<b>Clean Up at The End</b>	0	Beata Johnston, Hayden & Katie Rasmussen, Amanda Tahere, Ngahuia Wilson
<b>Mon 8 April - Final Clean Up</b>	0	Judith Griffin, Paula Watkins

### **NEW PUPILS**

A very special welcome to our new student, Māhina Cook who has joined us in Room 1. Welcome to Waitohu School.

### **TERM DATES**

Term 1 finishes **next Friday 12 April at 2.00pm**. The bus will leave at this time.  
Term 2 begins on Monday 29 April.

### **LOST PROPERTY**

Next week all lost property will be displayed in the hall for students to collect. I encourage you to pop into the hall and check the lost property cupboard (in the foyer of the hall) to ensure you get all the items that belong to your whanau. All items that remain at the end of the term will be given to charity.

### **SPORTS UNIFORM RETURNS**

Please return all uniforms to the office, they do not need to be washed. Thank you.

### **EVENTS – UPCOMING**

- Wheels Day – Senior Syndicate – Friday 5 April
- Gala – Sunday 7 April
- Board of Trustees Meeting – Tuesday 9 April at 7.15pm
- Assembly (10.20am) – Friday 12 April
- Final Day Term 1 – Friday 12 April
- Day 1, Term 2 – Monday 29 April
- Powhiri (10.10am) - Friday 3 May
- Assembly (10.10am) – Friday 10 May
- Board of Trustees Meeting – Tuesday 14 May at 7.15pm
- Senior Cross Country - Tuesday 21 May (p/p Wednesday 22 May)
- Student-Parent-Teacher Interviews - Wednesday 22 May 3.30 - 5.30pm
- Student-Parent-Teacher Interviews - Thursday 23 May 1.30 - 8.00pm
- Assembly (10.10am) – Friday 24 May
- Interschool Cross Country - Tuesday 28 May (p/p Wednesday 29 May)
- Queen's Birthday Weekend - Monday 3 June

### **BIBLE IN SCHOOLS**

Bible in School tutors will begin their classes at the start of Term 2. Classes are held each Friday between 9.00am – 9.30am. Students who participate in the Bible in Schools programme will join other students from their year levels. These classes are run by volunteers from local churches. If you wish to know more about the programme, please don't hesitate to contact me. Students who do not participate in this programme will be provided with a range of learning opportunities by classroom teachers. Please complete the permission slip below to let me know whether or not your child is to participate in the Friday morning Bible in Schools programme, thanks.

---

### **BIBLE IN SCHOOLS**

I do / I do not (please circle) want \_\_\_\_\_ of Room(s) \_\_\_\_\_  
to attend Bible in Schools.

Name(s): \_\_\_\_\_ Signature: \_\_\_\_\_

*(Please return this slip to the school office by Friday 12 April).*

## **COMMUNITY NEWS**

### **YOGA CLASSES FOR KIDS & ADULTS - WAITOHU SCHOOL HALL**

A parent has kindly organised for yoga lessons to be run out of our school hall on Tuesday evenings. These are kid friendly beginner yoga classes within which mindfulness and meditation will also be taught. I encourage you to really consider whether this may be a useful skill for your child or yourself to learn. The benefits of learning yoga as a tool to bring calm and balance are experienced by many - there is now a local option for our community to try this out. More information is below:

**Dates:** Tuesday 2, 9, 16 & 30 April, Tuesday 7 and 14 May

**Time:** 6.30 - 8.00pm,

**Venue:** Waitohu School Hall

**Cost:** \$50 child / \$80 adult (if cost is a barrier please contact Maine Curtis to discuss a reduced charge)

Any enquiries can be made to **Chris Heenan on 027 555 5681**.

### **ŌTAKI ANZAC DAY CELEBRATION**

An ANZAC Day Celebration will be held at Ōtaki War Memorial on Main Street, Ōtaki on Thursday 25 April commencing at 5.50am. Everyone is invited to attend.

### **FUNZONE SCHOOL HOLIDAY PROGRAMME**

Funzone will be holding a school holiday programme based at Waitohu School Hall from Monday 15 - Friday 26 April. Enrol online at [www.funzone.co.nz](http://www.funzone.co.nz) or call 0800 543 9696 or email [info@funzone.co.nz](mailto:info@funzone.co.nz) for more information.

### **INFORMATION EVENING**

An information evening is being held by the New Zealand School Trustees Association at Ōtaki College on Wednesday 10 April at 6.00pm to explain the role of being on a Board of Trustees.

### **ŌTAKI POOL'S AUTUMN PARTY**

On Friday 5 April there will be an Autumn Pool Party for 8-13 year olds at Ōtaki Pool from 4.00-7.30pm with inflatables, dunk tank and games. Cost is \$3 for entry which includes a free sausage.

### **ŌTAKI POTTERY CLUB HOLIDAY WORKSHOPS**

Ōtaki Pottery Club has School Holiday Clay Workshops for young people aged 7 - 18 years with tutor Paula Archibald. The cost is \$30 per person including materials and firing. Workshops are on Tuesday 16 April 10.00am - 12.00pm with the theme of Castles and 1.00pm - 3.00pm create a serving or dinner plate

### **ŌTAKI GOLF CLUB - TEAM FUN EVENT**

A Team Golf Event will be held at Ōtaki Golf Club, 2 Old Coach Road, on Saturday 6 April at 1.30pm. This is a great opportunity for young beginner golfers (aged 5-14 years) to get out on the course alongside friends and family. You can play 6 shortened holes as a team with all equipment provided with a sausage sizzle and prizes afterwards. There will be relaxed rules to ensure it's all about kids having fun and mum and dad can come along to caddy. Cost is \$5 per person. Go to [www.wgi.co.nz/team-golf-registration](http://www.wgi.co.nz/team-golf-registration) to register on your own or with a friend.

### **FREE BASKETBALL REFEREE COURSE (ENTRY LEVEL)**

On Saturday 13 April there will be a free BBNZ Referee Course (Entry Level), at Kāpiti College Gym for those wanting to increase their basketball knowledge. The course will have a theory component from 9.00 - 11.00am and then ref practice from 11.00am - 2.00pm with the Kāpiti College Basketball Teams in their fun Mini Tournament. There is no assessment involved. Contact Andrea Broadhurst on 021 109 3382 or email [kapiticollegebball@gmail.com](mailto:kapiticollegebball@gmail.com) for more information. This course is in conjunction with Kāpiti Hoop Club.

### **ADULT BASKETBALL SCRIMMAGES**

Kāpiti Hoop Club are running Adult Basketball Scrimmages on Sunday's from 3.15 - 5.15pm at the Paraparaumu College Community Sport Hall, 151 Mazengarb Road, Paraparaumu. Men and women of all skill levels are welcome. Entry is \$5.00. Contact Lindsay on 027 619 4636 for more information.

### **TE KURA TIAKI HOLIDAY PROGRAMME AT NGĀ PURAPURA**

Te Kura Tiaki Holiday Programme based at Ngā Purapura will run from Monday 15 April - Friday 26 April (excluding Easter Holidays and Anzac Day), for 5 - 12 year olds. Parents can pre-purchase morning tea and lunch at the onsite café. The tamariki will be stimulated within Te Ao Māori which is utilized in everyday activities. Visit Ngā Purapura, see [www.wananga.com](http://www.wananga.com) or phone 364 9018 for more information.

### **FREE FUSSY EATERS FORUM**

There will be a free forum for parents, caregivers and health professionals of fussy eaters on Thursday 9 May, from 6.00 - 7.30pm at Palmerston North Convention Centre. The speakers will include; Dr Kirsty Ross, Clinical Psychologist (Massey University), Suzanne Aitken, Dietician (Central PHO), Dr Megan Pybus, Paediatrician (MidCentral Health). There are no bookings required just come along.

### **KĀPITI ISLAND FOR KIDS HOLIDAY PROGRAMME**

Kāpiti Island For Kids Holiday Programme is on from 22 - 24 April for 9 -12 year olds. This three day and two night programme includes nighttime kiwi spotting, nature adventures, fishing, swimming, harakeke weaving and games. Cabin accommodation (quad share), food, ferry and DOC permits included. Cost per person is \$395 and the programme is limited to 14 spaces. Email [bookings@kapitiisland.com](mailto:bookings@kapitiisland.com) for any enquiries or bookings.

### **KAKARIKI NATURE PLAY SCHOOL HOLIDAY PROGRAMME AT NGA MANU**

Kakariki Nature Play School Holiday Programme at Nga Manu is now open for bookings for 4 - 8 year olds. Tales of the Forest programme has lots of bush play, storytelling and puppets, natural crafts, fire pit and more. Session times are; Monday 15 April 1.00 - 4.00pm \$30 per child, Tuesday 16 April 9.15am - 3.00pm \$60 per child, Wednesday 17 April 1.00 - 4.00pm \$30 per child. Email [annburns.enrich@gmail.com](mailto:annburns.enrich@gmail.com) or call on 021 0243 0430 for more information.

### **EQUESTRIAN LESSONS WITH AMANDA WILSON IN ŌTAKI**

Equestrian lessons with Amanda Wilson are available for students on Saturday 20 and Sunday 21 April at Gorge River Equestrian, 141 Ōtaki Gorge Road. All heights and abilities welcomed, from 50cm upwards. Lessons will be in groups of four. The cost is \$80 for a 1 hour lesson, plus a \$10 ground fee. Email [equinebookings@gmail.com](mailto:equinebookings@gmail.com) for more information or to make a booking.

### **FEMME NATALE 2 SHOW AT BATS THEATRE WELLINGTON**

Femme Natale 2, a comedy sketch show about parenthood, is showing at Bats Theatre, Wellington from 26 April - 4 May at 7.30pm and 4 May at 2.00pm Babes in Arms Matinee. Tickets cost; \$20 full, \$15 concession and \$14 for groups of 6 or more. Book at [www.bats.co.nz](http://www.bats.co.nz) or phone 04 802 4175.

### **YOUTH SKILLS DEVELOPMENT WITH HORSES**

Equine Assisted Learning involves hands on interactive group activities with horses. All the activities are ground based, no horse-back riding is involved. No prior experience with horses is necessary. "Herd by Horses" are holding a Youth Skills Development course for youth aged 10-13 years in small groups of 4-6 people on Thursdays 4.00-5.15pm starting on 24 April and running for 6 weeks. The course is based at 593 Waikawa Beach Road, Manakau, Levin and costs \$240 for the course (\$40 per session). A 50% deposit (non-refundable) is payable on booking. To register email [herdbyhorsesnz@gmail.com](mailto:herdbyhorsesnz@gmail.com) or call Anna on 027 734 5887 or Kelly on 027 635 3537.

### **EASTER HOLIDAY GO CLUB STEM WORKSHOPS**

The Go Club is a STEM group for girls aged 5 -12 exploring science, technology, engineering and maths in a fun, safe and supportive environment. Holiday workshops are on Monday 15 April - Beautiful Biology, Tuesday 16 April - Leaping Lego, Wednesday 17 April Chocolate Chemistry at 6 Tongariro Street, Paraparaumu. The cost is \$65 per day for 8.30am - 3.00pm (after care available until 5.15pm). Go to [www.enrolmy.com/the-go-club](http://www.enrolmy.com/the-go-club) to book a space.

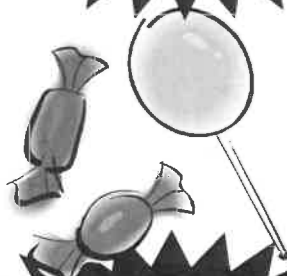
# Waitohu School Gala 2019

## Sunday 7 April

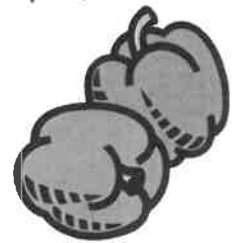
11am – 2pm

LIVE  
MUSIC

VEGETABLES  
and PLANTS



HOT DOGS  
SAUSAGES  
BURGERS  
LOLLIES  
CAKES  
DRINKS  
ETC



BOUNCY  
CASTLES

FIREFIGHTERS  
CONFIDENCE  
COURSE  
CHALLENGE

DIGGER  
DIGGING

QUICK  
FIRE  
RAFFLES

WHITE  
ELEPHANT  
STALLS

AND  
HEAPS  
MORE